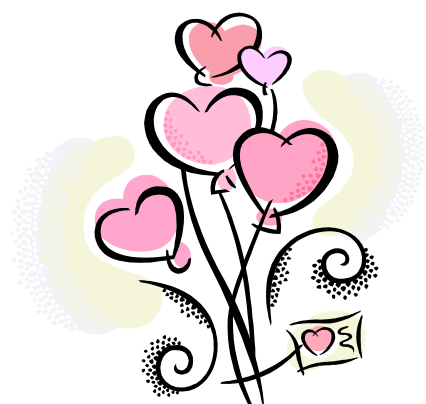


NOTES FROM THE CENTER

February 4, 2011

[www.ICLRU.org](http://www.ICLRU.org)

*Our Valentine Party date has been changed to **Feb. 23** to accommodate make-up classes due to the recent snow. Join our Valentine Party on Wed., Feb. 23 in Alumni Hall at 11:30 am for lunch, entertainment, and fun! Sign up in room 316 \$12 pp.*

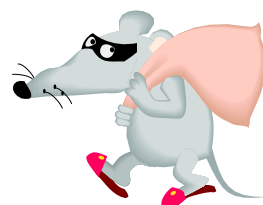


**What's Up at ICLRU?**

- Monday, February 7 Spring Study Group Brochure will be posted on the ICLRU website.
- Monday, February 7 Early registration for Spring Study Groups begins for 2010 & 2011 coordinators. Register in person Rm. 316 or by email to [OfficeManager@ICLRU.org](mailto:OfficeManager@ICLRU.org)
- Friday, February 11 Winter Lecture Series speaker, Susan Salach, presents Humor & Healthy Aging in Alumni Hall from 10:00am to 11:30am
- Monday, February 21 Spring Study Groups Registration begins.
- Wednesday, February 23 Valentine Party
- February 24 Field Trip to Hull House Museum is FULLY BOOKED—NO SEATS LEFT

**Registration for Spring Study Groups  
Monday through Friday  
February 21 through February 25  
(Spring Study Groups Begin March 21)**

[Link to the IL Atty. General Identity Theft Hotline website from our Jan. 28 lecture.](#)  
[Click here to open.](#)



Remember to complete your Winter Study Group Evaluations online. [Link to form.](#)

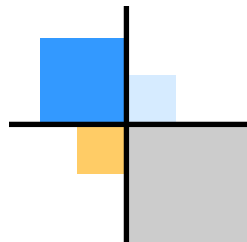
**Lunchtime Programs**

11:45 am – 12:45 pm

**Plato's Place**

**Room 330**

**Wednesday, February 9**



Is male power and/or privilege a myth?

For event cancellation announcements, call the ICLRU Center: 1-224-523-6497

**Things To Do...**

**Kings, Queens, and Courtiers: Art in Early Renaissance France**

The majestic French court circa 1500 arrives in Chicago Feb. 27— May 30. The Art Institute of Chicago is the only North American venue for this extraordinary range of rare and precious objects. This exhibition tells the story of art in this dynamic period through a mixture of spiritual and secular work: tapestries, stained glass, goldsmith work, monumental sculpture, painted portraits and altarpieces, and illuminated manuscripts. For additional info see:

[www.artic.edu](http://www.artic.edu)



[Turner Classic Movie February Schedule](#), click here

[New York Times Bestseller List](#), click here



Questions or comments? Do you have content for future Updates? Please contact Bob Masterson at [OfficeManager@iclrु.org](mailto:OfficeManager@iclrु.org) or call 1-224-523-6497.



Susan Salach, President & CEO, AgingInfoUSA

**Winter Lecture February 11  
Humor and Healthy Aging**

Sue has worked in the geriatric healthcare field for close to 20 years. As an Author of 2 caregiving books, Along Comes Grandpa, Caregiving Resources for People in the Real World, and If I Walked in Her Shoes, a novel focused on the relationship between a daughter and her aging mother. As a National Speaker, Sue utilizes her personal and professional experiences to educate and empower both professionals and the community at large. Sue's unique humor-laced programs address significant issues affecting our fast-paced lives. Sue was the 2010 recipient of the YWCA Marguerite Henry Leadership Award for Communications / Technology for her contribution to family caregivers. She feel blessed to have partnered with Sue Zawacki and Susan Avello to create [AgingInfoUSA](#). Sue utilizes her comprehensive experience and enthusiasm to assist this dynamic organization in finding innovative ways to reach out to family caregivers in corporations and the community.



Friendship Village of Schaumburg  
'Life is Better Among Friends'

Exclusive Sponsor of ICLRU's Winter Lecture Series.  
Visit them at:

[www.friendshipvillage.org](http://www.friendshipvillage.org)