

ICLRU UPDATE

INSTITUTE FOR CONTINUED LEARNING, ROOSEVELT UNIVERSITY

WHAT'S UP AT ICLRU?

YOU MAY BE STRESSED AND NOT EVEN KNOW IT. JOIN US AT THE HEALTH AWARENESS 411 SEMINAR — Fri., Sept. 14, in Alumni Hall. Kick off the Fall ICLRU session with Coffee and scones served at 8:30 am. Then listen to Dr. Sheldon Cohen speak on Stress, Hormones, Nerves. Enjoy a delicious lunch in the courtyard. After lunch, Dr. Bud Beatty, Associate VP for Roosevelt's College of Pharmacy will introduce speakers from the Pharmacy College and student groups who will speak on health and self-care. **Non-members are welcome.** [CLICK HERE](#) for the registration form.



ONLY 2 GOLDEN SEATS LEFT! WHITE PINES INN AND THE OLDE ENGLISH FAIRE Sat., Oct. 6, travel to Oregon, IL. The first stop is the White Pines Inn for a buffet luncheon, then on to the Stronghold Castle along the Rock River. Once a year, the castle and grounds become the site of the Olde English Faire. There will be performing minstrel acts, sword fights, jesters and magic, singing madrigals, and performances of Shakespearean theater. [CLICK HERE](#) for the registration form.

THIS WEEK'S UPDATE

SEPTEMBER 7, 2012

In this issue:

What's Up at ICLRU?	1
Notes From the Center	1
Lunchtime Programs	2
Things To Do	2
Paul Green moderates a debate in Schaumburg	3

Due to unexpected delays in room confirmations, when you receive your confirmation and waitlist letters you will see To Be Determined (TBD) where you would normally see a room assignment.

We'll keep you informed via e-mail, and room assignments will be posted on the Bulletin Board and on the Easel inside Entrance Door 3

Thanks for your patience!

NOTES FROM THE CENTER

Please wait until after Sept. 11 to contact The Center about Fall Study Group Confirmation & Waitlist Letters. The letters will be mailed today.

NOTE: THE CENTER WILL BE CLOSED ON TUESDAY, SEPTEMBER 11th.

[ICLRU Events Calendar](#)

**INSTITUTE
FOR
CONTINUED
LEARNING,
ROOSEVELT
UNIVERSITY**

1400 Roosevelt Rd
Rm 316
Schaumburg, IL
60173

ICLRU Center
Hours: Mon-Thurs.
11:30am –1:00 pm
Tel: 224-523-6497
Email:
[Officemanager@
iclru.org](mailto:Officemanager@iclru.org)



"BOOK ENDS"

ICL NON FICTION BOOK CLUB

Next Meeting Date:
Sept. 20th, Thursday,
Room 327
3:15 to 4:30 pm.

LUNCHTIME PROGRAMS

11:45 am—12:45 pm

PLATO'S PLACE
WED., SEPT, 12, RM. 330
Mary Crisanti moderates
Which is on the rise around the
world, Capitalism or Socialism?

NEW—TUESDAYS WITH
COMPUTERS begins SEPT. 18 from
11:45 to 1:00 pm in Rm. 373



Friendship Village
of Schaumburg

**"Life is Better
Among Friends"**

Exclusive Sponsor
of ICLRU's
Winter Lecture Series.

Visit them at:

www.friendshipvillage.org

THINGS TO DO

*Chicago Grandstand
Big Band*

Ultimate Tribute to the
Swing & Jazz Eras **September 9,**
at 3 pm Forest View Educational
Center, 2121 S. Goebbert Rd., in
Arlington Heights. Tickets: 847-
253-0282 or 847-718-7702 or
visit to 9 pm

Sunday Musicale

Arlington Heights Memorial Library,
500 N. Dunton Ave.,
847-392-0100 www.ahml.info
Sponsored by the
Friends of the Library
**Performances begin at 2 p.m. in the
Hendrickson Room.**

Register at the Reception
Desk on the second level,
847-392-0100, or online at
ahml.info.



September 30
WFMT's Carl Grapentine
"Claude Debussy
Impressions of a Frenchman"

The French composer Claude
Debussy was born 150 years ago--
August 22, 1862. One of the most
influential composers in leading
music into the 20th century, he also
had a great effect on the next
generation of composers. His
experiments with color, sound, and
atonality were called
"impressionism," a term he disliked.
Still, his sound remains unique to
this day.

**INSTITUTE
FOR
CONTINUED
LEARNING,
ROOSEVELT
UNIVERSITY**



*...because learning
is a lifelong
experience*

www.ICLRU.org



Paul Green

PAUL GREEN MODERATES A DEBATE

STAY INFORMED; BE SURE TO VOTE

The following event is being sponsored by the Legislative Committee of the Schaumburg Business Association.

Thursday, September 13, at 7:30 P.M.

A debate, among the following State candidates at The Prairie Center for the Performing Arts in Schaumburg, 201 Schaumburg Ct., Schaumburg, IL

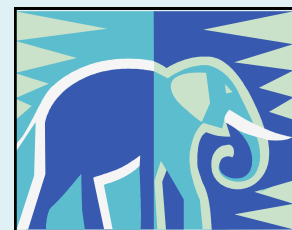
This debate will be moderated by ICLRU favorite Dr. Paul Green.

22nd District: State Sen. Michael Noland & Cary Collins

28th District: State Sen. Dan Kotowski & Jim O'Donnell

44th District: State Rep. Fred Crespo & Ramiro Juarez

56th District: State Rep. Michelle Mussman & John Lawson



**We have heard that Paul Green will
make a presentation at the
Roosevelt Schaumburg Campus
in October.**

More information to come.